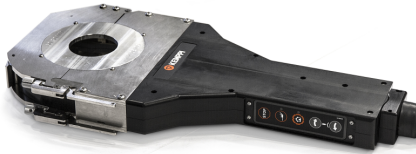


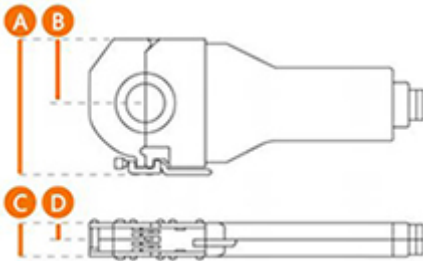
A5 Closed Head Clamp 7530



OVERVIEW

Welding happens inside the weld head, where the tungsten electrode rotates around the tube and welds the joint together. Weld head handle accommodates buttons for controlling the operation of the system during welding. Weld heads are water-cooled.

TECHNICAL SPECIFICATIONS



A5 Closed Head Clamp 7530

Product code	6206000
Weight	6.4 kg
Tube diameter	9 - 75 mm
A	202 mm
B	96 mm
C	43 mm
D	19.5 mm
Rotor gear radius	54.6 mm